



## NEWS FROM THE CUTTING EDGE

*Helpful Tips From The Professionals At Hyde IBS*

There's been a lot of talk about tariffs in the news lately and how it might affect raw material pricing. Hyde is pleased to note that the vast majority of our steel comes from mills in the United States or European Union. We believe this smart sourcing will benefit our customers not only in the long run, but in the short term as we don't anticipate having to pass along any steel tariff surcharges.

Speaking of good news, we've got some new products and news to discuss in this issue of The Cutting Edge. Also, to underscore the importance of steel to our world and businesses, we offered some "Fun Facts About Steel" in this edition.

If you have a unique cutting application, e-mail us at [info@hydeblades.com](mailto:info@hydeblades.com) and we can help create new opportunities for your business today and in the future. Enjoy your look through this issue!

### LEADING EDGE PRODUCT:

#### SHREDDER KNIVES OFFER INDUSTRY LEADING PERFORMANCE FOR TIRE RECYCLING



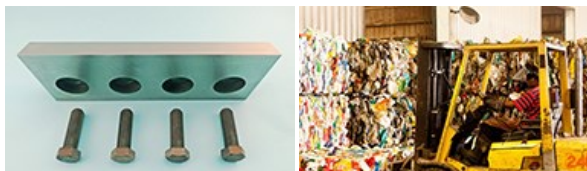
A full line of tire shredder blades designed for the most common machinery brands are available from **D&S Manufacturing**, a division of Hyde Industrial Blade Solutions (IBS). If you process scrap tires for recycling and repurposing for a variety of applications, D&S Shredder Knives provide longer knife life resulting in less downtime and higher productivity.

All our shredder knives are manufactured to meet or exceed OEM specifications utilizing a proprietary heat-treatment process. We use only premium grade, high chrome alloy tool steel for superior overall performance. D&S Moly-Chrome knives provide greater toughness and longer service life. And we back this all up with ISO 9001 certification - our promise of quality and trouble-free performance!

For more information, visit our website and download our brochure at: <http://industrialbladesandknives.com/wp-content/uploads/2017/09/Shredder-Knives.pdf>

### LEADING EDGE PRODUCT:

#### D&S REPLACEMENT GRANULATOR KNIFE BOLTS HELP REDUCE THE RISK OF EXPENSIVE KNIFE FAILURES IN RECYCLING OPERATIONS



### TRADE SHOW SCHEDULE

Visit us at these upcoming trade shows or conventions:

#### April 28 - May 1, 2018

NAHAD Convention  
(Hydraulic Hose),  
Marco Island, FL

#### May 7-11, 2018

NPE 2018 (Plastics Processing),  
Orlando, FL

#### May 22-24, 2018

TexProcess Americas 2018  
(Textile/Cloth),  
Atlanta, GA

#### June 25 - 27, 2018

United Fresh 2018 Show (Food  
Processing),  
Chicago, IL

#### September 12-15, 2018

NIBA/PTDA Joint Convention  
(Belting/Fluid Power),  
Phoenix, AZ



## Play a Pivotal Role in Preventive Maintenance and Increased Machine Uptime

When granulating knives for the recycling industry don't perform or worse, have a catastrophic event, it can result in hours or even days of costly downtime of production lines. Failure of fastening bolts on the knives can result in damage to the more expensive knives and/or recycling processing machines.

Bolts stretch and wear over time. Equipment manufacturers recommend replacing bolts every time knives are sharpened or replaced. Manufactured under an ISO 9001:2015 quality system, replacement **Granulator Knife Bolts** from **D&S Manufacturing**, a division of Hyde Industrial Blade Solutions (IBS), help reduce the risk of knife failure due to bolt fatigue.

D&S Granulator Knife Bolts are made from carbon alloy steel and are quenched and tempered to achieve optimum tensile strength. These Grade 8 bolts are rated to a minimum tensile strength of 150,000 PSI, strong enough to withstand the toughest granulating production challenges. Coated with a black oxide finish, these bolts are fully threaded up to the bolt head and are manufactured to all applicable IFI standards. They also comply fully to the Fastener Quality Act of 1999.

For more information, visit our website and download our brochures at: <http://www.industrialbladesandknives.com/markets/plastics-processing/>

## COLD HARD STEEL FACT: FUN FACTS ABOUT STEEL



With the steel industry being in the political spotlight lately, let's look at some fun facts about this amazing material:

- Almost 69 percent of steel is recycled in North America each year, which is more than paper, aluminum, plastic, and glass combined.
- Steel is roughly 1,000 times stronger than iron in its purest form, and it can be recycled without loss of strength.
- Steel is the main material used in delivering renewable energy like solar, hydro, and wind power.
- The first major mass demand for steel came from railroad companies. Many industries soon followed in demanding steel for their needs. Steel was first used in mass production to construct railroad tracks.
- While steel has been around for a while, 75% of existing steel types have been developed in the last 20 years.
- The steel industry has an estimated \$900 billion turnover, making it the second largest industry in the world after oil and gas.
- Steel is used in almost every industry, including energy, construction and housing (the largest consumer of steel), automotive and transportation, infrastructure, packing, and machinery.
- The United States is the third leading producer of steel behind Japan and China.
- Steel roofs last more than 50 years while traditional roofs last about 17 years.



**Our Solid Steel Offer:**  
Receive a refund if  
you are not satisfied  
with our product in  
the first 60 days!

[Request Information](#)

- 75 percent of all major appliances are comprised of steel.
- The average computer is about 25 percent steel.
- Because steel and iron expand when heated, the Eiffel Tower (1887), is about 6 inches taller in the summer than the winter.
- Two-thirds of all canned goods' packaging are made out of steel.
- More than 600 steel cans are recycled every second in the United States.

For all your cutting applications, contact our sales department at [sales@hydetools.com](mailto:sales@hydetools.com) for a no obligation consultation.

Sources:

<http://www.kaempfandharris.com/blog/20-facts-about-steel-that-you-probably-didnt-know>

<https://www.capitalsteel.net/news/blog/steel-facts-might-surprise-you>

---

## **HAPPENINGS AT HYDE:**

### **HYDE GOES GREENER!**



*Expanding our commitment to clean energy to further reduce carbon footprint*

Almost doubling our commitment to clean energy generation, we've added an additional 784 high-efficiency LG solar panels on top of our headquarters building for the betterment of the community and long-term cost savings.

In its first year, the contribution to the power grid from the new addition (or eliminating use from other power generation sources), will provide energy equal to that used by 28 homes. The total yearly generation savings would replace greenhouse gas emissions from 55 cars, while sequestering carbon by the equivalent of 247 acres of the average U.S. forest!

In combination with the original 349kW array installed in 2015, this new 310 kW system will now account for about 35% of our electric consumption increasing solar contribution up from between 15-20% of the company's energy usage. We now have a total of 1,634 panels in use!

---

**Hyde Industrial Blade Solutions — Solutions You Can Count On!™**



**Hyde Tools, Inc.** • 54 Eastford, Rd., Southbridge, MA 01550 • [www.hydeblades.com](http://www.hydeblades.com)  
Ph: (800) 872-4933 or (508) 764-4344 x2205 • [info@hydeblades.com](mailto:info@hydeblades.com)